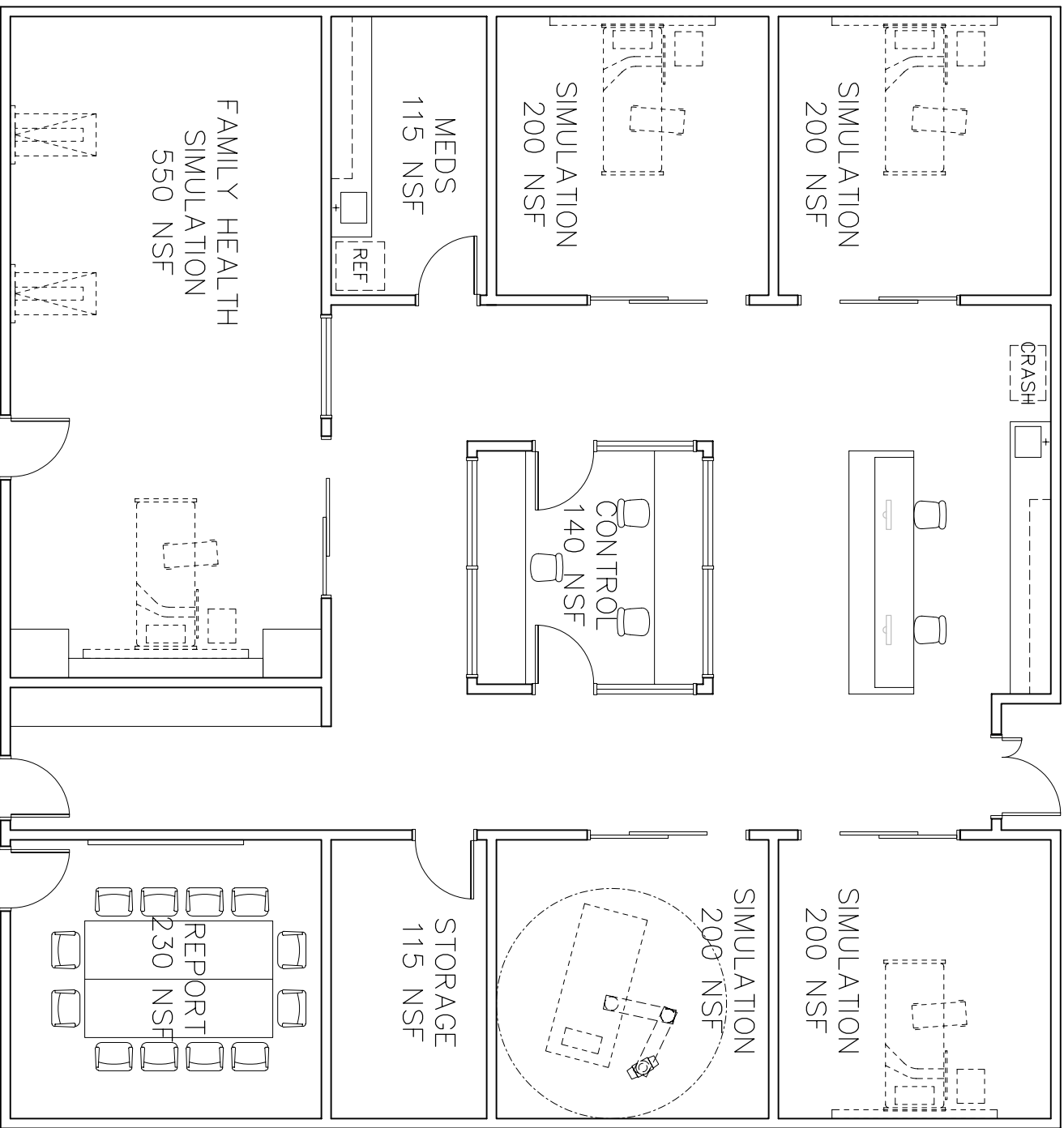




LEWIS-CLARK  
STATE COLLEGE



The Estime Group  
1030 NW 12th, Suite 2  
Portland, OR 97209  
P (503) 224-9970  
F (503) 227-9288



SCALE: 1/8" = 1'-0"

HEALTH EDUCATION BUILDING  
COMPONENT CONCEPTUAL LAYOUTS  
NURSING SIMULATION LABORATORY  
FAMILY HEALTH AND GENERAL SIMULATION

Date: October 26, 2007

Revisions

Drawing No.

4