

Social Sciences at Lewis-Clark State College

Understanding the World. . . .

Acting for the Community



Division of Social Sciences Lewis-Clark State College An Overview

**Lewis-Clark State College
Division of Social Sciences
500 8th Ave. Lewiston, ID 83501 USA
(208) 792-2291
<http://www.lcsc.edu/SocialSciences>**

***For further information contact:
Dr. Marilyn Levine, Chair
mlevine@lcsc.edu***

Social Sciences Division - Presentation Overview

- Mission & Programs
- Social Sciences Program
- Justice Studies Program
- Social Work Program
- The Faculty & Students
- Career Opportunities



LCSC - Tradition & Innovation

Social Sciences Division - Mission Statement

The general purpose of social science is to describe and understand humanity from a basis of observable evidence. The social scientist examines human organization and individual roles within their respective environments. The Social Sciences Division emphasizes interdisciplinary approaches to analyzing compelling human concerns. The division focuses primarily on high quality teaching, but also values scholarship, research, and community service.

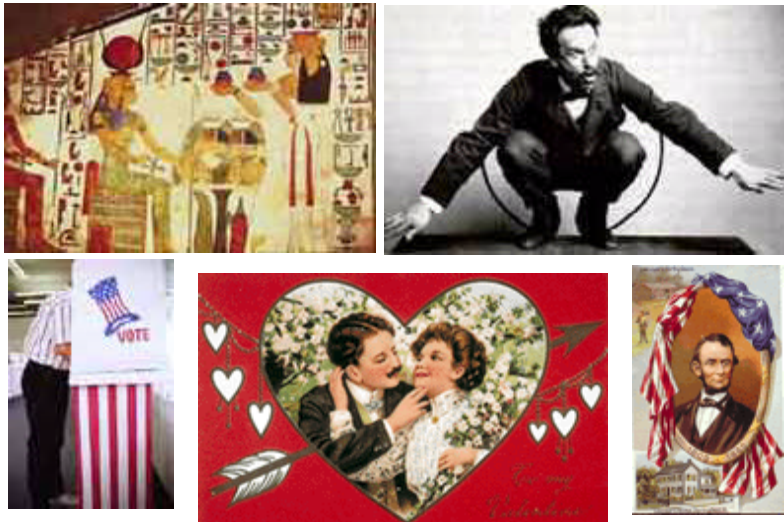
Social Sciences Division - Degree Programs

- Social Science
- Justice Studies
- Social Work

Social Sciences Division - Social Science Degree Program

Five Concentration Areas

- Anthropology
- Economics
- History
- Political Science
- Sociology



Checklist for Social Science Program

Introductory Component - 3 cr.

Skills Area - 12 cr.

Concentration Area - 12 cr.

Social Science Breadth - 9 cr.

Diversity Component 6 cr.

Senior Research Project - 6 cr.

Foreign Language - 8 cr.

Sample Major Courses:

Cultural Anthropology

World Civilizations

North American Indians

History of the Westward Movement

The Rise of Modern China

Social and Political Philosophy

Terrorism in the Contemporary Era

The Family

Social Stratification

Macroeconomics

Computers and Social Sciences

The Social Science Major integrates the social sciences into a composite program. It is a liberal arts major that provides a balance between domestic, regional, and global issues. The major, when taken as part of an integrated secondary education program is designed to prepare students for professional teaching.

Social Sciences Division - Justice Studies Degree Program

Two Concentration Areas

- **Criminal Justice**
- **Corrections/ Human Service**

Checklist for Justice Studies Program

Major Courses- 33 cr.

Criminal Justice Concentration - 15 cr.

or

Corrections/Human Services - 15 cr.

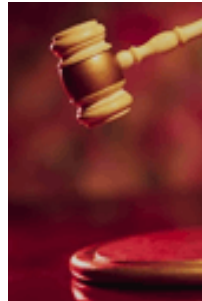
Sample Major Courses:

Introduction to Criminal Justice

Criminal Procedure

Juvenile Delinquency

Criminal Law



The Justice Studies major is designed to provide students with a professional education that will prepare them for a variety of careers in federal, state, and local criminal justice and human service agencies. The curriculum is strongly oriented to the social and behavioral sciences. As a part of the commitment to developing a professionally oriented student, field training placements in criminal justice agencies are available.

Social Sciences Division - Social Work Degree Program

Additional Requirements

- **Admission to the BSW Program**
- **Senior research project**
- **Standardized exit exam(s)**

Checklist for Social Work Program

Social Work requires formal admission to the program after the students have completed:

Introduction to Social Work - 3 cr.

Social Work Generalist Practice - 3 cr.

30 Credits of Specified General Education Courses

and

Other Social Work courses - 39 cr.

and

Upper Division Social and Behavioral Courses - 15 cr.

Sample Major Courses:

Human Behavior in the Social Environment

History and Social Welfare

Social Work Research Methods

Field Instruction 1 / Senior Seminar



The Bachelor of Social Work (BSW) is designed to prepare entry-level generalist practice social workers with the knowledge, skills and values necessary to help families, groups, individuals, and communities solve social problems. LCSC offers the only accredited BSW in northern Idaho.

Social Sciences Division - The Faculty & Students



The Social Science division at LCSC has a faculty that truly mentors and engages the students in an intellectually challenging program. The faculty have active research, teaching, and community activities that combine with the interdisciplinary nature of the Social Sciences division. The breadth of the faculty benefits the students.

An Engaged Faculty



Some Faculty in the Division of Social Sciences

From Left to Right: Diana Ames-Marshall (Anthropology), Bill Clouser, Director (Social Work), Jerry Jolley (Sociology, Justice Studies), Richard K. Moore (Political Science), Gene Straughan and Family (Justice Studies), Ray Miller, Director (Justice Studies), Marilyn Levine, Chair (History)

For a complete listing of the faculty please visit our Divisional Web site:

<http://www.lcsc.edu/SocialSciences/>

Social Sciences Division - The Faculty & Students

Social Science faculty all emphasize faculty-student interaction, including off-campus activities such as conferences and competitions. We have an active Political Forum that holds campus-wide discussion of relevant current events, a Mock Trial Program that has won regional and national acclaim, and our Social Work club is one of the most active Student clubs on the campus.

In addition to the student clubs, many social science professors take their students on field trips and to conferences where they present research and learn about their disciplines.

Student Clubs from Social Science:

Student Organization of Social Workers (SOSW)

Pre-Law Club

Mock Trial Program

LCSC Political Forum



Tradition, Excellence, and Innovation
in Justice Studies/Social Sciences



Students presenting social science posters in Mexico City, the Mock Trial Logo, and LCSC students on their way to a regional Asian Studies conference in Montana.

Social Sciences Division - Career Opportunities

Graduate with Jobs!

A student who graduates from our program will have skills that are fitted for the current job market. The majority of our graduates have not only found employment, but are employed in areas they have trained for at LCSC.

Social Sciences Major - Typical Jobs

Research (private and public sectors)

Educator

Business sector

Public Administration

Public History

Public Policy Analyst

Budget Analyst

Diplomat

Politician

Intelligence

Planner

Urban Administration

International Business

Lobbyist

Pollster

Journalism



Social Scientists (anthropologists, economists, historians, political scientists, psychologists, and sociologists) generally work as researchers, administrators, and counselors for a wide range of employers, including Federal, State, and local governments, educational institutions, social service agencies, research and testing services, and management consulting firms. Other employers include international organizations, associations, museums, and historical societies. Many additional individuals with training in a social science discipline teach in colleges and universities, and in secondary and elementary schools. (Occupational Outlook Handbook)

Social Sciences Division - Career Opportunities

Justice Studies Major - Typical Jobs

Law Enforcement

Public Policy

Corrections Administration

Crime Analyst

Investigator

Border Patrol

City/State/County Police

Probation/Parole Officer

Import/Export

Industrial Commission

Insurance Commission

U.S. Immigration & Naturalization Services



The opportunity for public service through law enforcement work is attractive to many because the job is challenging and involves much personal responsibility. Furthermore, law enforcement officers in many agencies may retire with a pension after 20 or 25 years of service, allowing them to pursue a second career while still in their 40s. (Occupational Outlook Handbook)

Social Sciences Division - Career Opportunities

Social Work Major - Typical Jobs

Case Worker

Child or Adult Protective Service

Child Welfare Worker

Drug Dependency Counselor

Family Services Caseworker

Gerontology Social Worker

Government Worker

Health Care Social Worker

Human Service Worker



Social workers practice in a variety of settings. In hospitals and psychiatric hospitals, they provide or arrange for a range of support services. In mental health and community centers, social workers provide counseling services on marriage, family, and adoption matters, and they help people through personal or community emergencies, such as dealing with loss or grief or arranging for disaster assistance. In schools, they help children, parents, and teachers cope with problems. In social service agencies, they help people locate basic benefits, such as income assistance, housing, and job training. Social workers also offer counseling to those receiving therapy for addictive or physical disorders in rehabilitation facilities, and to people in nursing homes who are in need of routine living care. (Occupational Outlook Handbook)

Social Sciences Division - Career Opportunities

Some Resources for Graduate School and Career Planning

Campus Programs Online

<http://campusprogram.com/>

American Universities

<http://www.clas.ufl.edu/CLAS/american-universities.html>

Academic Info - Career Placement

<http://www.academicinfo.net/studentcareer.html>

