

LCMail & WarriorWeb

LCMail is the Student E-Mail/Calendar Messaging System &
WarriorWeb is the Online Student Record/Info System

What is LCMail and Why Should I Use It?

LCMail is LCSC's official source to reach LCSC students through e-mail, news articles, and calendar events.

LCMail is the student messaging system. Along with the e-mail system, LCMail offers personal and shared calendars, allows document sharing and has live chat rooms, an address book to store information and e-mail addresses, and online photo albums to share photographs or graphics.

LCMail is a lifetime e-mail account.

LCMail is similar to other online e-mail systems and is easy to use. LCMail is accessible from any computer with internet access.

How do I Access LCMail?

- 1). Go to LCMail at <http://lcmail.lcsc.edu> from any computer with internet access
- 2). Click the Log In button and type in your login ID. Login ID and password are case sensitive.
- 3). Type in your password and click the Log In button to continue.
- 4). After a successful login, you must accept the

LCMail Quick FAQ's

All current LCSC students have an account setup on LCMail automatically.

Login is: first initial, middle initial, and full last name, ex: jdsmith

Default Password: birthdate, 2 digit month, day, and year, ex: 010180, January 01, 1980.

E-Mail Address is: first initial, middle initial, full last name @lcmail.lcsc.edu ex: jdsmith@lcmail.lcsc.edu

What is WarriorWeb?

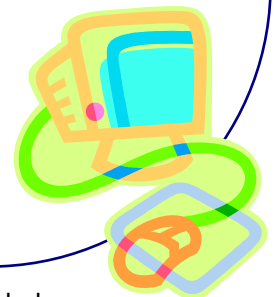
WarriorWeb is LCSC's online student record system. Students can access their class schedules, view their grades and unofficial transcripts, search through course offerings, and check to see if their transcript request has been sent.

How do I Access WarriorWeb?

- 1). Access WarriorWeb at warriorweb.lcsc.edu and use the same login ID and password as LCMail (except if you have used WarriorWeb previously and changed your password).
- 2). Use WarriorWeb to print out class schedules, search for classes, check class availability, and view transcripts or grades.

NOTE: The Registrar's Office will not be printing student schedules. Use WarriorWeb to print your class schedule. If you need computer access, go to the student computer labs in the SUB 202 or Library. One week after the term has ended, grade reports will be available on WarriorWeb. No grade reports will be mailed.

Lewis-Clark
STATE
COLLEGE



*If you need help, contact the IT Helpdesk at (208) 792-2231. **NOTE:** Some logins may include a numerical character because of name similarities. Please call if you are not able to log in.