

All information contained in this document is proprietary. Do not distribute or reproduce without Hillco Technologies, Inc.'s written permission.

| REV. | DESCRIPTION            | DATE     | BY  |
|------|------------------------|----------|-----|
| A    | Release for Production | 06/25/08 | SJW |

Sheet 1 of 1

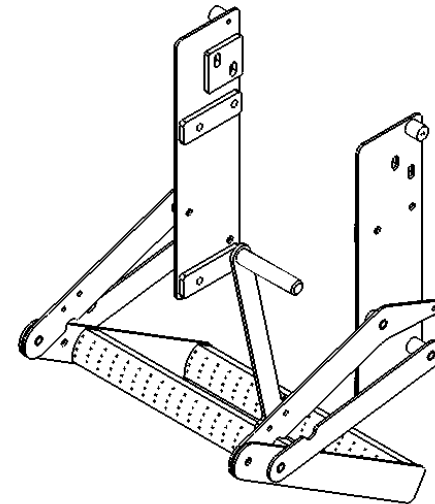
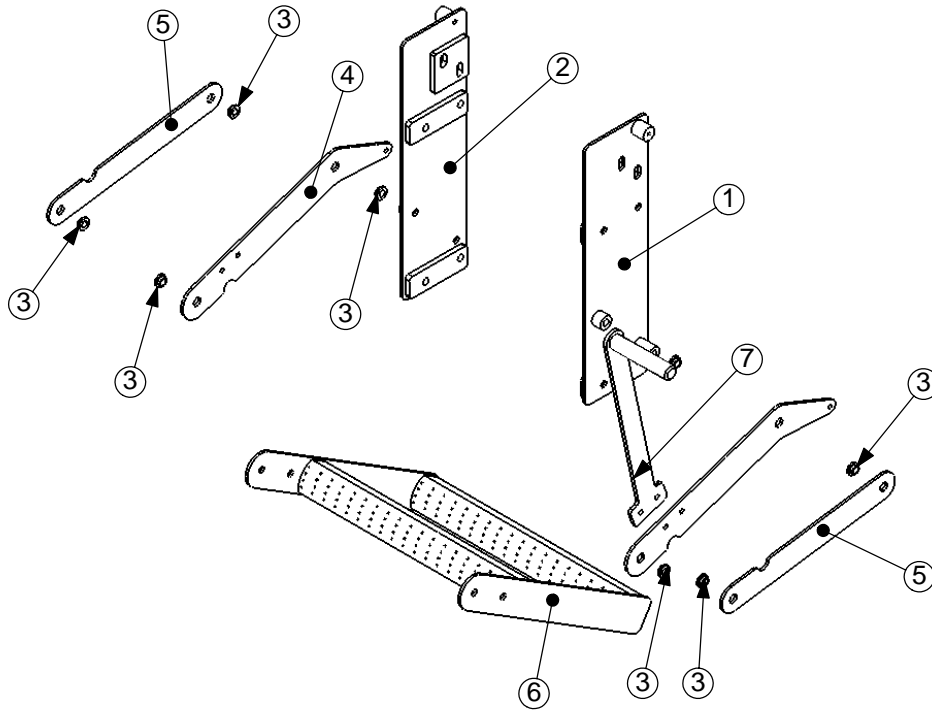


Part #

FOLD LADDER A

|             |     |             |                         |             |
|-------------|-----|-------------|-------------------------|-------------|
| Designed By | DJC | Description | FOLDING LADDER ASSEMBLY |             |
| Drawn By    | SJW | Product     | LA-3700S                | Wt: 0.0000  |
| Page ID     | 1   | Material    | SEE BELOW               | Scale: 1:12 |

| ITEM NO. | QTY. | PART NUMBER |
|----------|------|-------------|
| 1        | 1    | LA-267001   |
| 2        | 1    | LA-266991   |
| 3        | 8    | LM-267981   |
| 4        | 2    | LM-266961   |
| 5        | 2    | LM-266971   |
| 6        | 1    | LA-267011   |
| 7        | 1    | LA-248861   |



FOLD LADDER

All information contained in this document is proprietary. Do not distribute or reproduce without Hillco Technologies, Inc.'s written permission.

Sheet 1 of 1



Part #

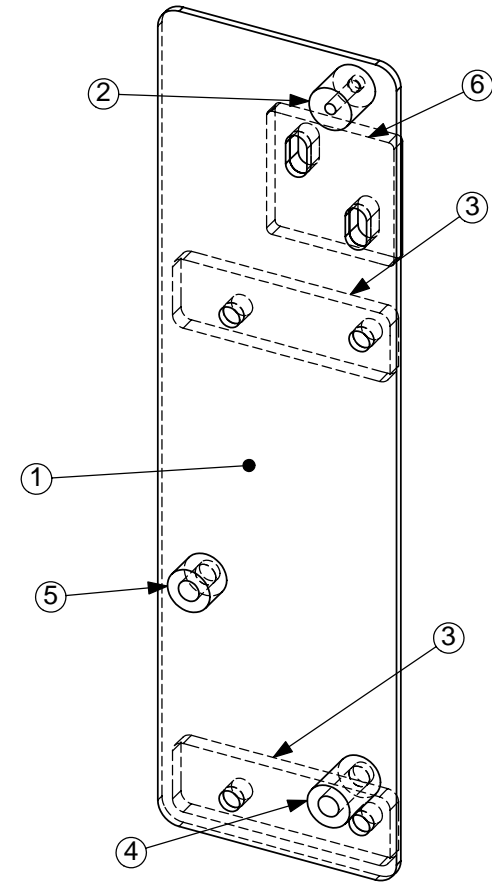
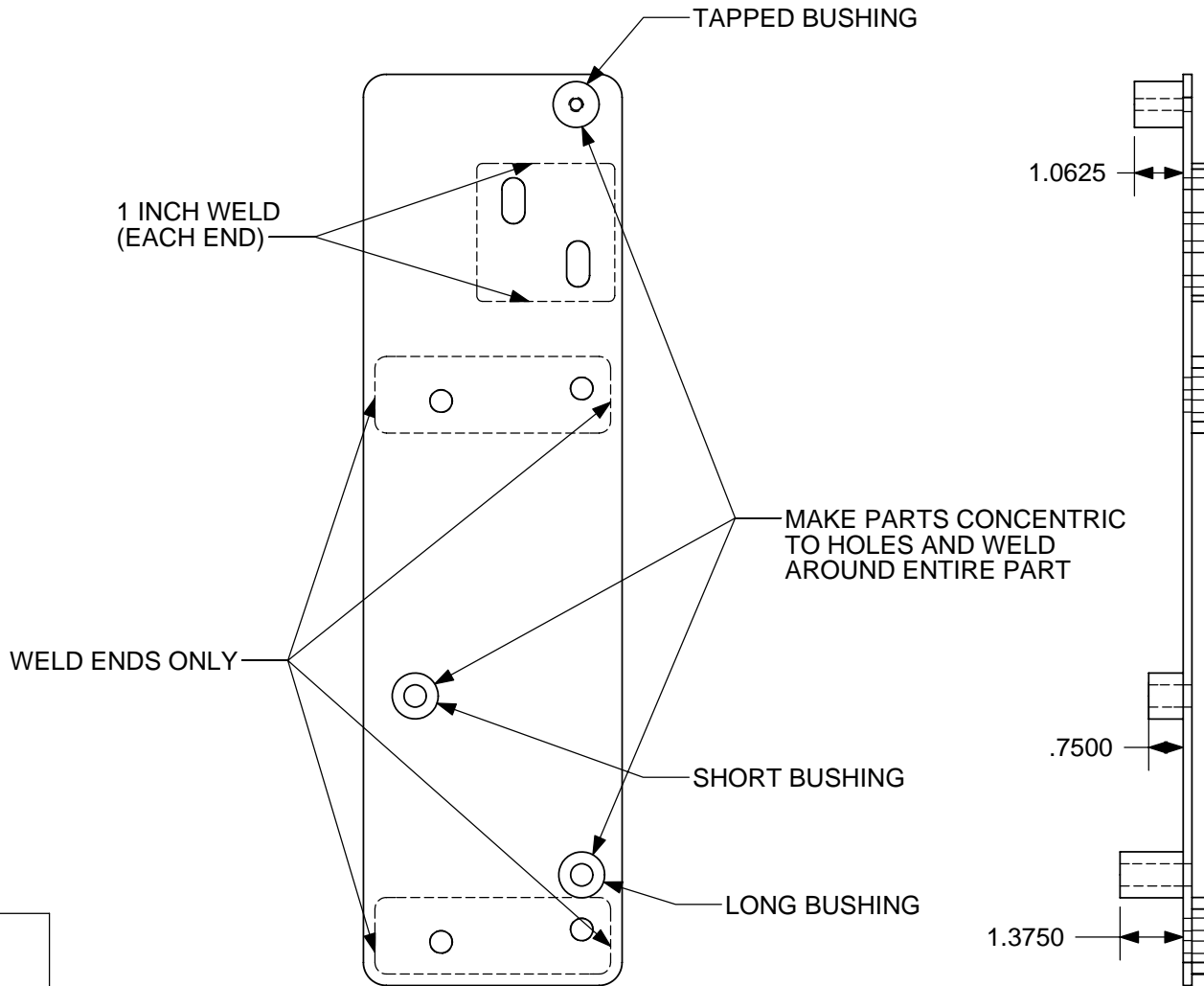
LA-267001

A

| REV. | DESCRIPTION            | DATE     | BY  |
|------|------------------------|----------|-----|
| A    | Release for Production | 03/31/08 | DJC |


|             |     |             |                          |            |
|-------------|-----|-------------|--------------------------|------------|
| Designed By | DJC | Description | LM ASM, RIGHT LADDER MNT |            |
| Drawn By    | DJC | Product     | LA-003700H               | Wt: 3.5854 |
| Page ID     | 2   | Material    | SEE BELOW                | Scale: 1:4 |

| ITEM NO. | QTY. | PART NUMBER |
|----------|------|-------------|
| 1        | 1    | LM-266941   |
| 2        | 1    | LM-236121   |
| 3        | 2    | LP-266981   |
| 4        | 1    | LM-236082   |
| 5        | 1    | LM-236112   |
| 6        | 1    | LP-269891   |

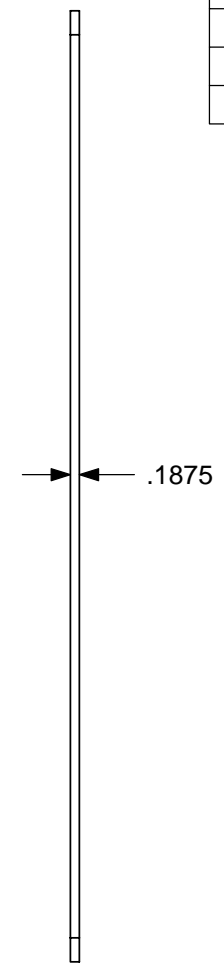
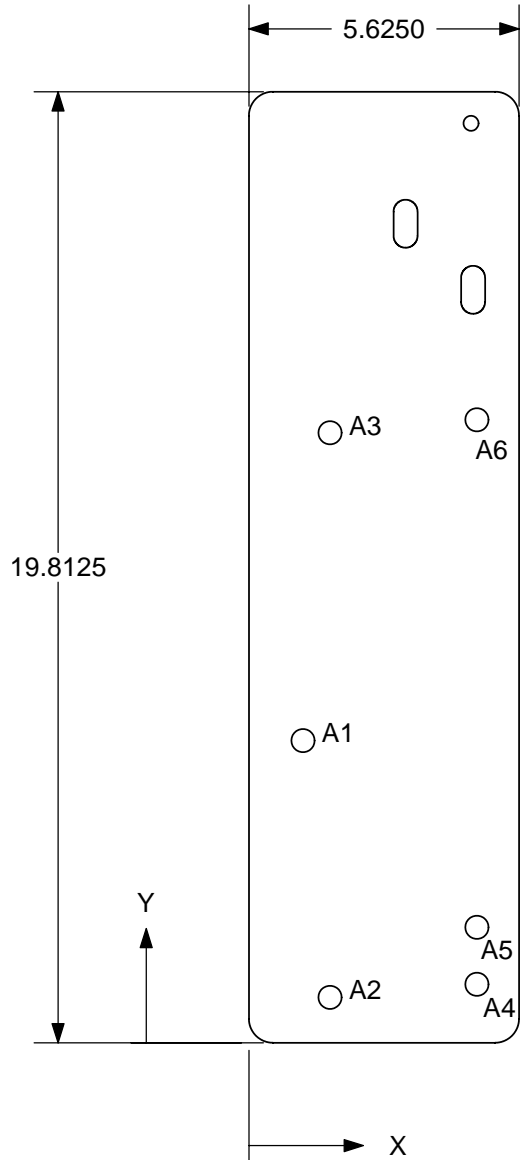


LA-267001

All information contained in this document is proprietary. Do not distribute or reproduce without Hillco Technologies, Inc.'s written permission.

|              |     |  |                               |            |           |   |
|--------------|-----|--|-------------------------------|------------|-----------|---|
| Sheet 1 of 2 |     |  |                               | Part #     | LM-266941 | A |
| Designed By  | DJC | Description  | LM PLATE, FOLDING LADDER SIDE |            |           |   |
| Drawn By     | DJC | Product  | LA-003700                     | Wt: 0.7469 |           |   |
| Page ID      | 1   | Material   | PLT A36 3/16                  | Scale: 1:4 |           |   |

| TAG | X LOC  | Y LOC   | SIZE    |
|-----|--------|---------|---------|
| A1  | 1.1250 | 6.2961  | Ø .4844 |
| A2  | 1.6879 | .9471   |         |
| A3  | 1.6879 | 12.7085 |         |
| A4  | 4.7470 | 1.2188  |         |
| A5  | 4.7470 | 2.4063  |         |
| A6  | 4.7470 | 12.9802 |         |



LM-266941

All information contained in this document is proprietary. Do not distribute or reproduce without Hillco Technologies, Inc.'s written permission.

Sheet 2 of 2



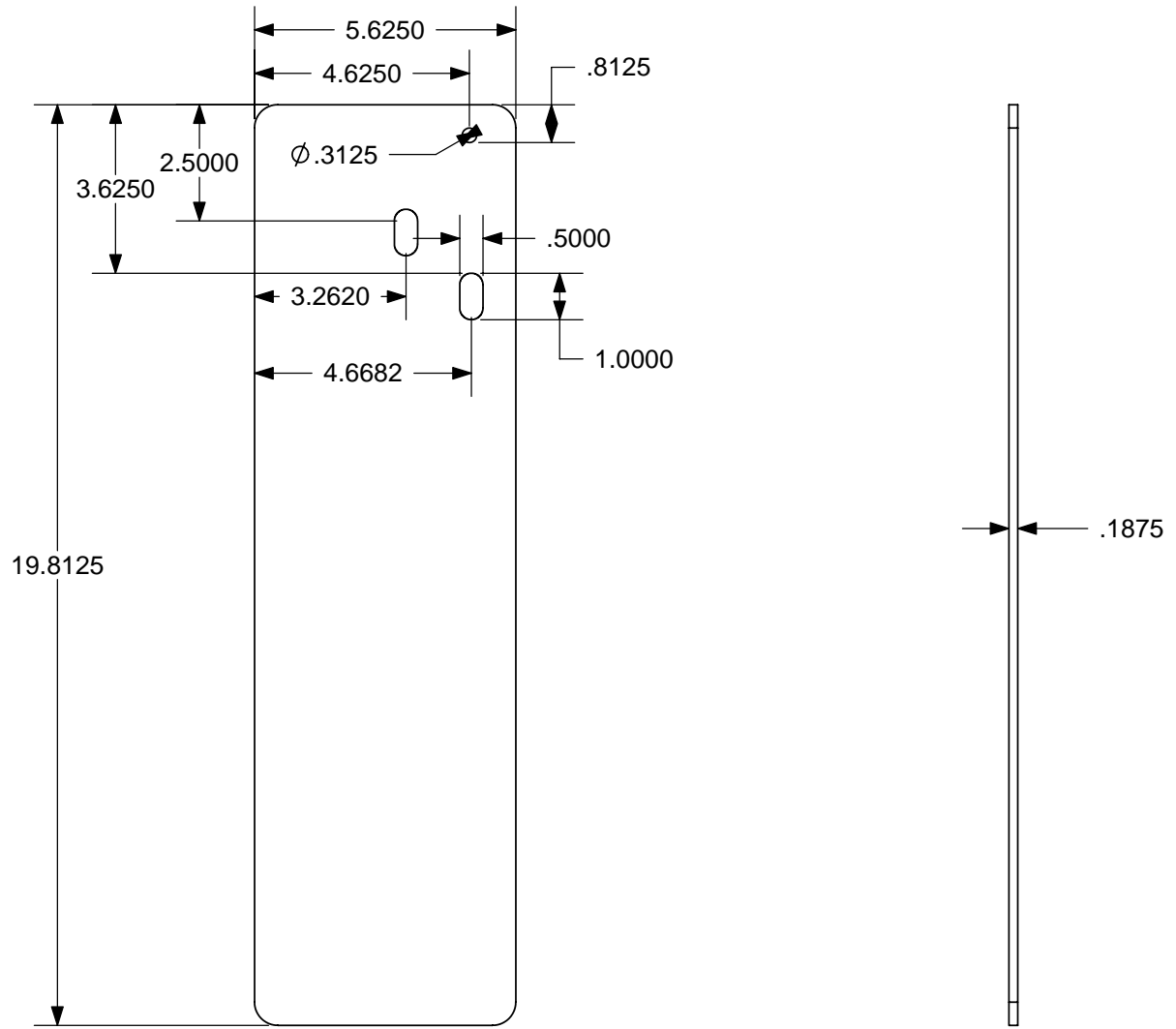
Part #

LP-266941

A

| REV. | DESCRIPTION            | DATE     | BY  |
|------|------------------------|----------|-----|
| A    | Release for Production | 03/31/08 | DJC |

|             |     |             |                               |            |
|-------------|-----|-------------|-------------------------------|------------|
| Designed By | DJC | Description | LM PLATE, FOLDING LADDER SIDE |            |
| Drawn By    | DJC | Product     | LA-003700                     | Wt: 0.7469 |
| Page ID     | 1   | Material    | PLT A36 3/16                  | Scale: 1:4 |



LP-266941

All information contained in this document is proprietary. Do not distribute or reproduce without Hillco Technologies, Inc.'s written permission.

Sheet 1 of 1



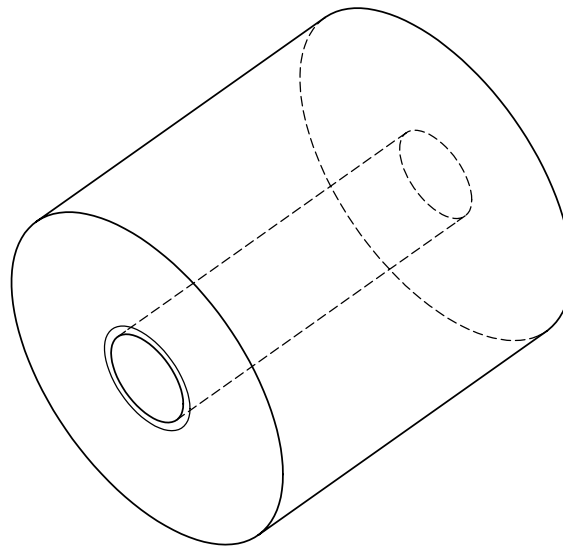
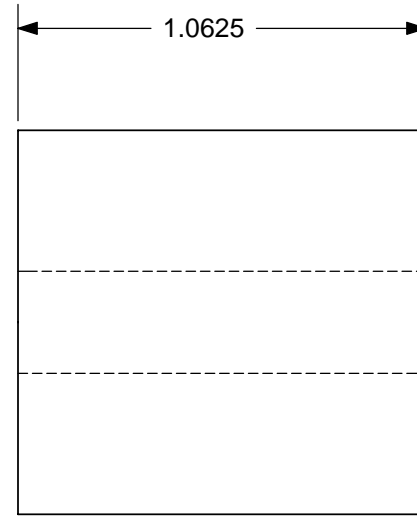
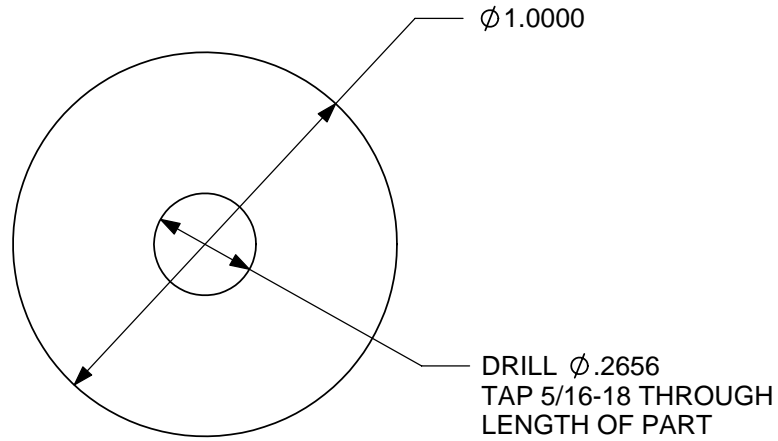
Part #

LM-236121

A


| REV. | DESCRIPTION            | DATE     | BY  |
|------|------------------------|----------|-----|
| A    | Release for Production | 05/29/01 | DJC |

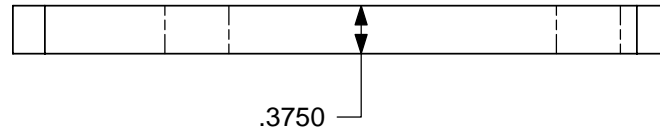
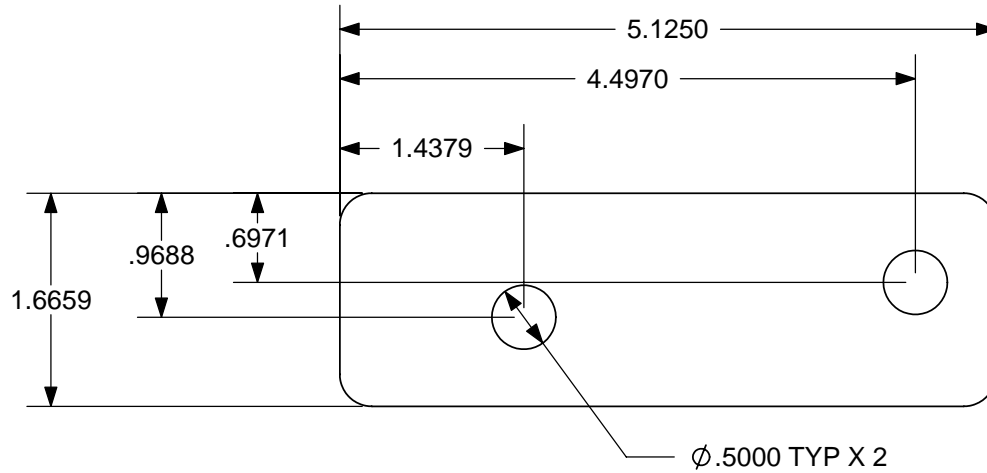
|             |     |             |                                |            |
|-------------|-----|-------------|--------------------------------|------------|
| Designed By | LJH | Description | LM MOUNT, FOLDING LADDER STRUT |            |
| Drawn By    | DJC | Product     | LA-002970                      | Wt: 0.220  |
| Page ID     | 3   | Material    | RND 1018 CD 1                  | Scale: 2:1 |



LM-236121

All information contained in this document is proprietary. Do not distribute or reproduce without Hillco Technologies, Inc.'s written permission.

|              |                        |  |     |             |                         |              |
|--------------|------------------------|--|-----|-------------|-------------------------|--------------|
| Sheet 1 of 1 |                        |  |     | Part #      | LP-266981               | A            |
| REV.         | DESCRIPTION            | DATE   | BY  | Designed By | Description             |              |
| A            | Release for Production | 03/31/08   | DJC | DJC         | LM SPACER, LADDER MOUNT |              |
|              |                        |  |     | Drawn By    | Product                 | Wt: 0.8596   |
|              |                        |  |     | Page ID     | Material                | Scale: 1:1.5 |
|              |                        |  |     |             | LA-003700               |              |
|              |                        |  |     |             | PLT A36 3/8             |              |



LP-266981

All information contained in this document is proprietary. Do not distribute or reproduce without Hillco Technologies, Inc.'s written permission.

Sheet 1 of 1



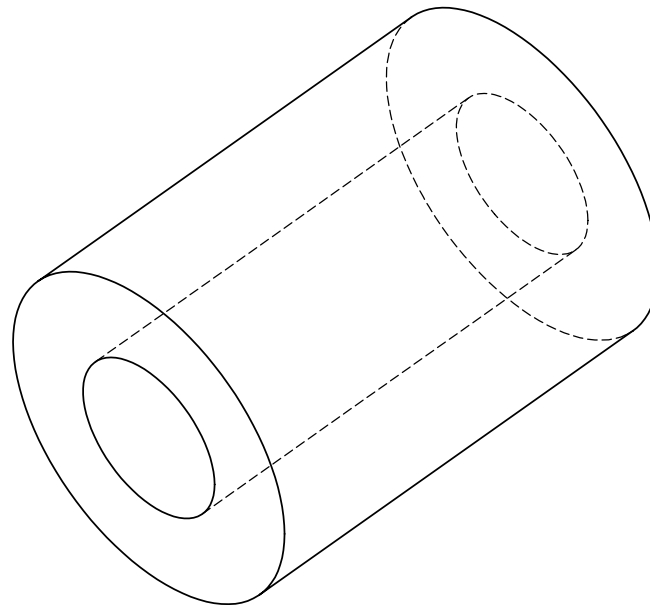
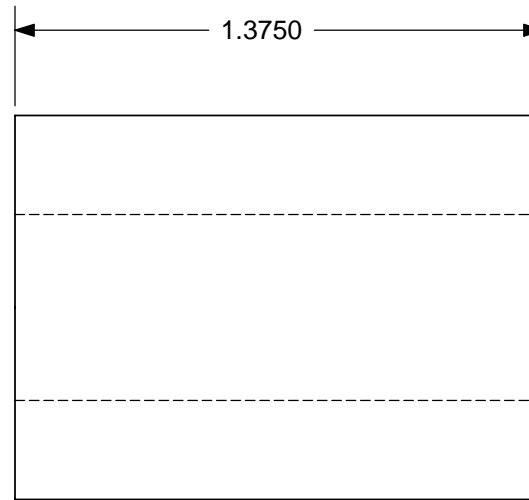
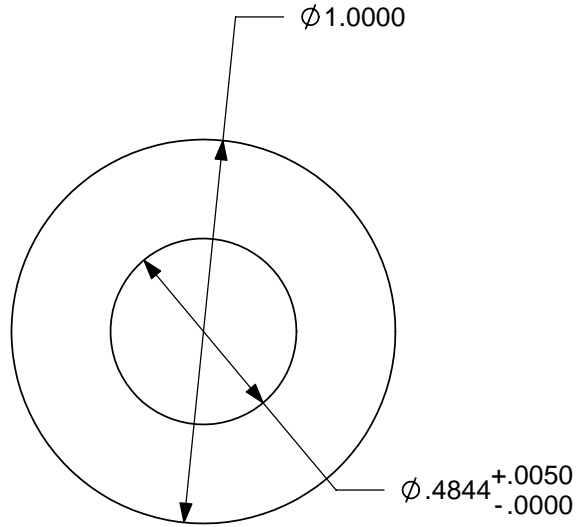
Part #

LM-236082

A

| REV. | DESCRIPTION            | DATE     | BY  |
|------|------------------------|----------|-----|
| A    | Release for Production | 05/29/01 | DJC |

|             |     |             |                                  |            |
|-------------|-----|-------------|----------------------------------|------------|
| Designed By | LJH | Description | LM BUSHING, LOWER FOLDING LADDER |            |
| Drawn By    | DJC | Product     | LA-002970                        | Wt: 0.030  |
| Page ID     | 3   | Material    | RND 1018 CD 1                    | Scale: 2:1 |



LM-236082

All information contained in this document is proprietary. Do not distribute or reproduce without Hillco Technologies, Inc.'s written permission.

Sheet 1 of 1



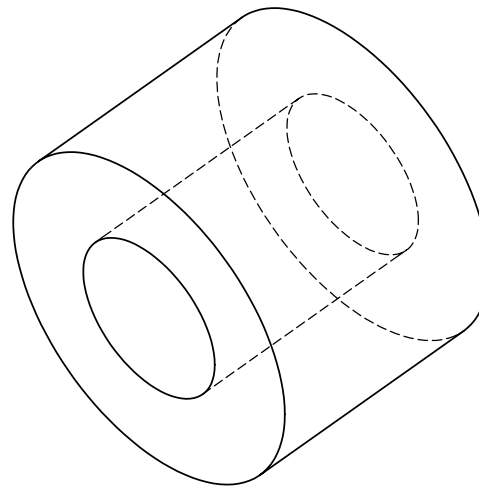
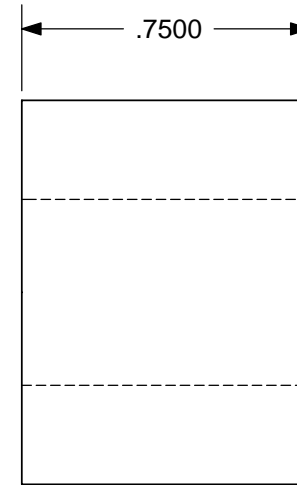
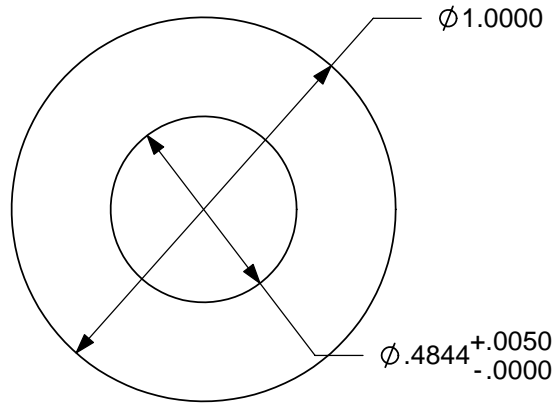
Part #

LM-236112

A

| REV. | DESCRIPTION            | DATE     | BY  |
|------|------------------------|----------|-----|
| A    | Release for Production | 05/29/01 | DJC |

|             |     |             |                                  |            |
|-------------|-----|-------------|----------------------------------|------------|
| Designed By | LJH | Description | LM BUSHING, UPPER FOLDING LADDER |            |
| Drawn By    | DJC | Product     | LA-002970                        | Wt: 0.016  |
| Page ID     | 3   | Material    | RND 1018 CD 1                    | Scale: 2:1 |



LM-236112

All information contained in this document is proprietary. Do not distribute or reproduce without Hillco Technologies, Inc.'s written permission.

Sheet 1 of 1



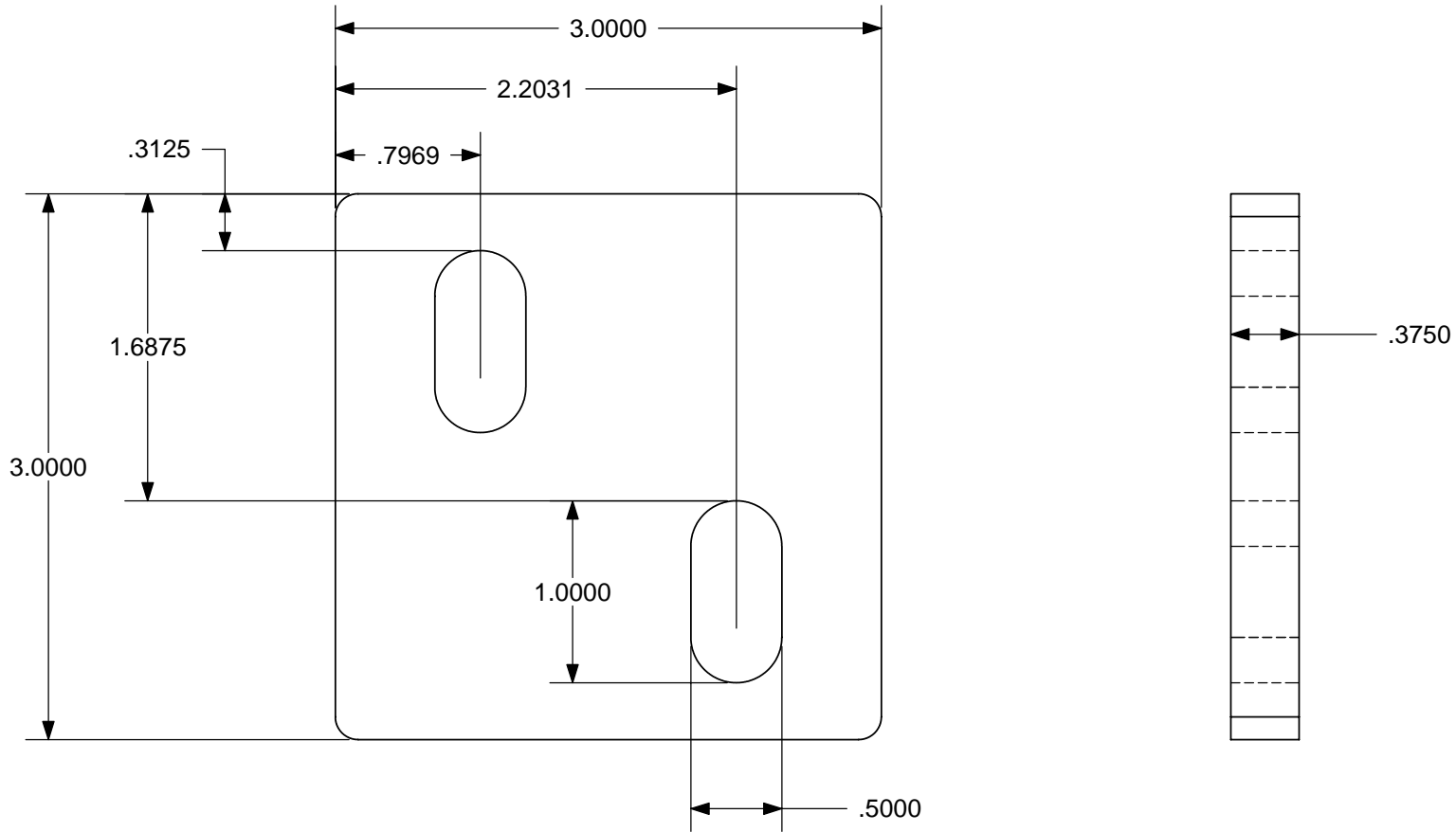
Part #

LP-269891

A

| REV. | DESCRIPTION            | DATE     | BY  |
|------|------------------------|----------|-----|
| A    | Release for Production | 08/30/08 | DJC |

|             |     |             |                     |            |
|-------------|-----|-------------|---------------------|------------|
| Designed By | DJC | Description | LM SPACER, HANDRAIL |            |
| Drawn By    | DJC | Product     | LA-003700H          | Wt: 0.8599 |
| Page ID     | 1   | Material    | PLT A36 3/8         | Scale: 1:1 |



LP-269891

All information contained in this document is proprietary. Do not distribute or reproduce without Hillco Technologies, Inc.'s written permission.

Sheet 1 of 1



Part #

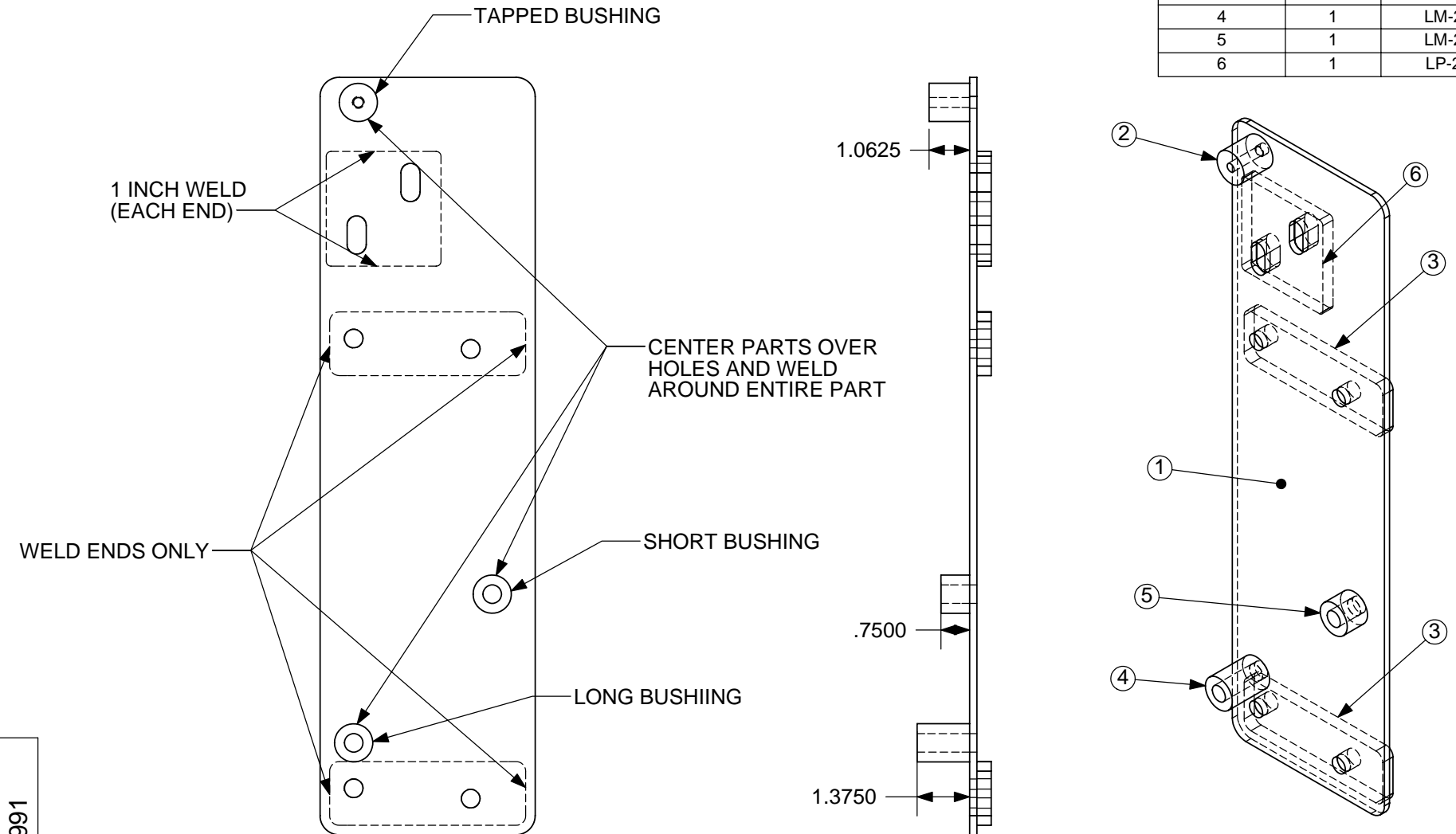
LA-266991

A

| REV. | DESCRIPTION            | DATE     | BY  |
|------|------------------------|----------|-----|
| A    | Release for Production | 03/31/08 | DJC |

|             |     |             |                         |            |
|-------------|-----|-------------|-------------------------|------------|
| Designed By | DJC | Description | LM ASM, LEFT LADDER MNT | Wt: 3.5854 |
| Drawn By    | DJC | Product     | LA-003700H              | Scale: 1:4 |
| Page ID     | 2   | Material    | SEE BELOW               |            |

| ITEM NO. | QTY. | PART NUMBER |
|----------|------|-------------|
| 1        | 1    | LM-266941   |
| 2        | 1    | LM-236121   |
| 3        | 2    | LP-266981   |
| 4        | 1    | LM-236082   |
| 5        | 1    | LM-236112   |
| 6        | 1    | LP-269891   |

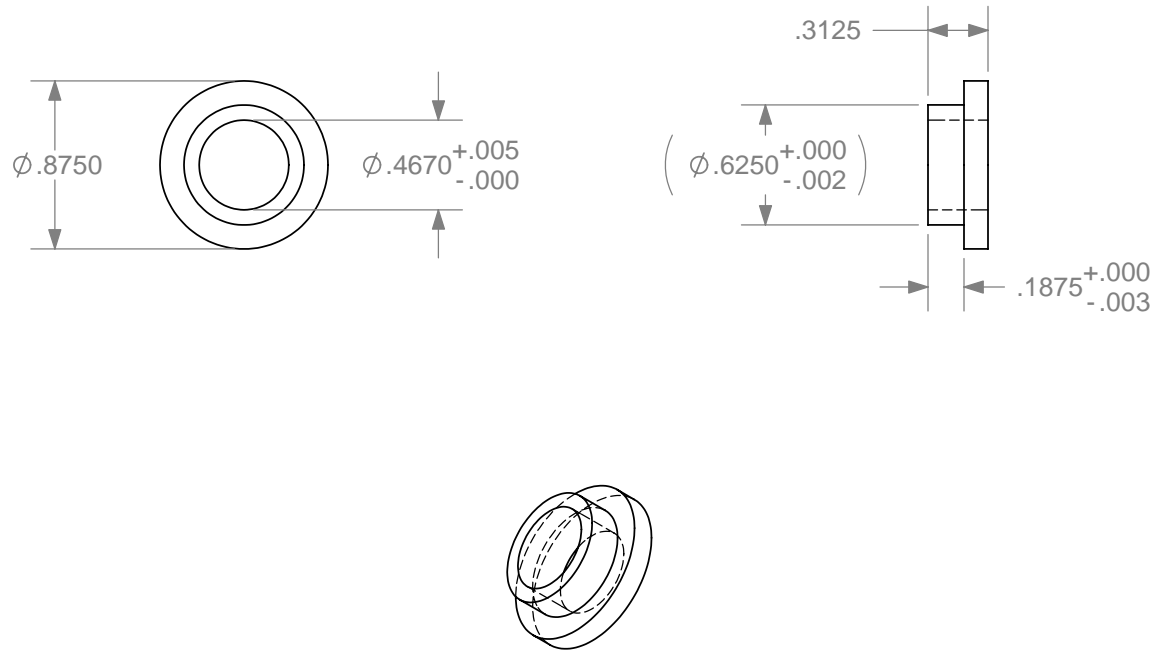


LA-266991

All information contained in this document is proprietary. Do not distribute or reproduce without Hillco Technologies, Inc.'s written permission.


| REV. | DESCRIPTION                           | DATE     | BY  |
|------|---------------------------------------|----------|-----|
| A    | Release for Production                | 05/16/08 | DJC |
| B    | CHANGED MATERIAL FROM RND 1144 CD 7/8 | 11/24/08 | SJW |

|              |  |             |                          |            |
|--------------|--|-------------|--------------------------|------------|
| Sheet 1 of 1 |  | Part #      | LM-267981                | B          |
| Designed By  | DJC  | Description | LM BUSHING, LADDER PIVOT |            |
| Drawn By     | DJC  | Product     | LA-003700                | Wt: 0.0224 |
| Page ID      | 1  | Material    | NYLON                    | Scale: 1:1 |

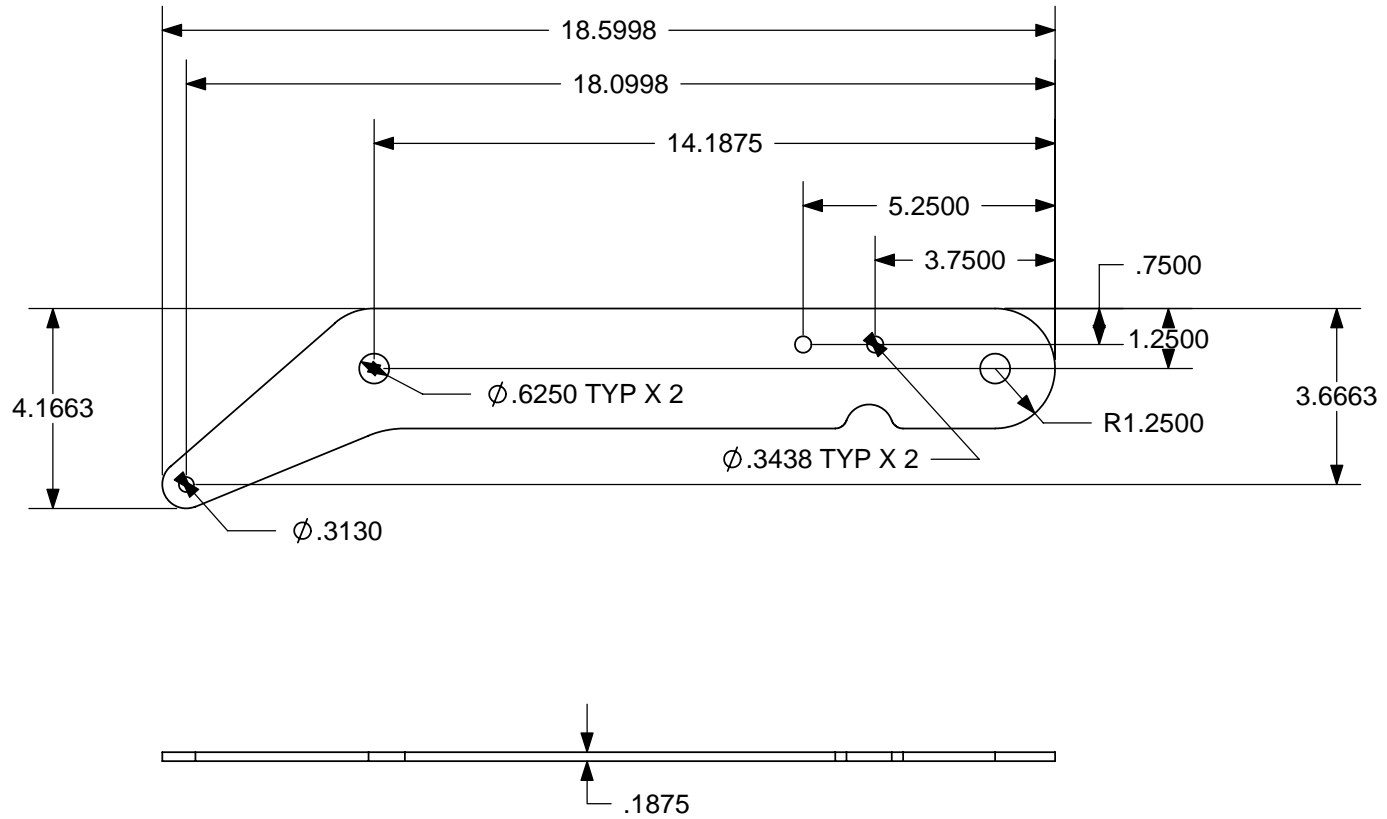


LM-267981

All information contained in this document is proprietary. Do not distribute or reproduce without Hillco Technologies, Inc.'s written permission.

|              |     |  |                     |            |           |   |
|--------------|-----|--|---------------------|------------|-----------|---|
| Sheet 1 of 2 |     |  |                     | Part #     | LM-266961 | B |
| Designed By  | DJC | Description  | LM PLATE, UPPER ARM |            |           |   |
| Drawn By     | DJC | Product  | LA-003700H          | Wt: 0.2850 |           |   |
| Page ID      | 2   | Material   | PLT A36 3/16        | Scale: 1:4 |           |   |

| REV. | DESCRIPTION                          | DATE     | BY  |
|------|--------------------------------------|----------|-----|
| A    | Release for Production               | 03/31/08 | DJC |
| B    | Increased Hole Diameter for Bushings | 08/30/08 | DJC |



LM-266961

All information contained in this document is proprietary. Do not distribute or reproduce without Hillco Technologies, Inc.'s written permission.

Sheet 1 of 2



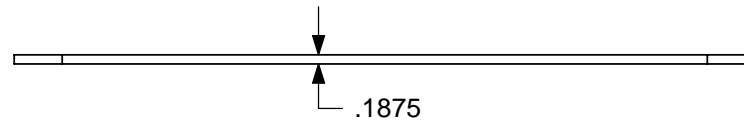
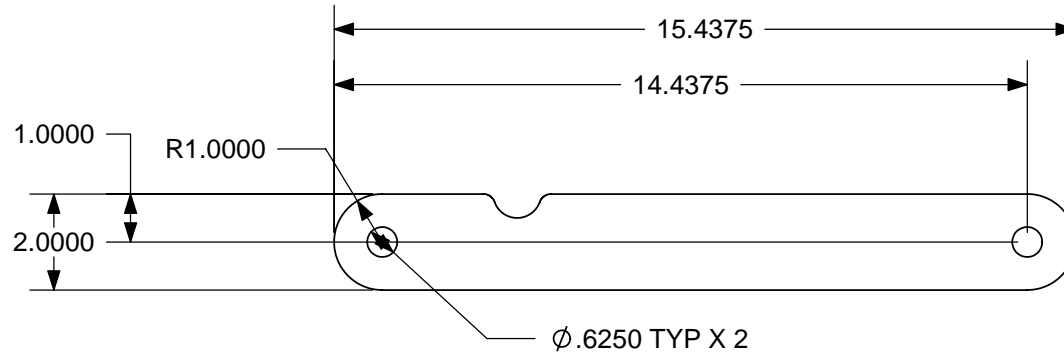
Part #

LM-266971

B

| REV. | DESCRIPTION                         | DATE     | BY  |
|------|-------------------------------------|----------|-----|
| A    | Release for Production              | 03/31/08 | DJC |
| B    | Increased Hole Diameter for Bushing | 08/30/08 | DJC |

|             |     |             |                             |            |
|-------------|-----|-------------|-----------------------------|------------|
| Designed By | DJC | Description | LM PLT, FOLDING LADDER LINK |            |
| Drawn By    | DJC | Product     | LA-003700H                  | Wt: 0.196  |
| Page ID     | 2   | Material    | PLT A36 3/16                | Scale: 1:4 |



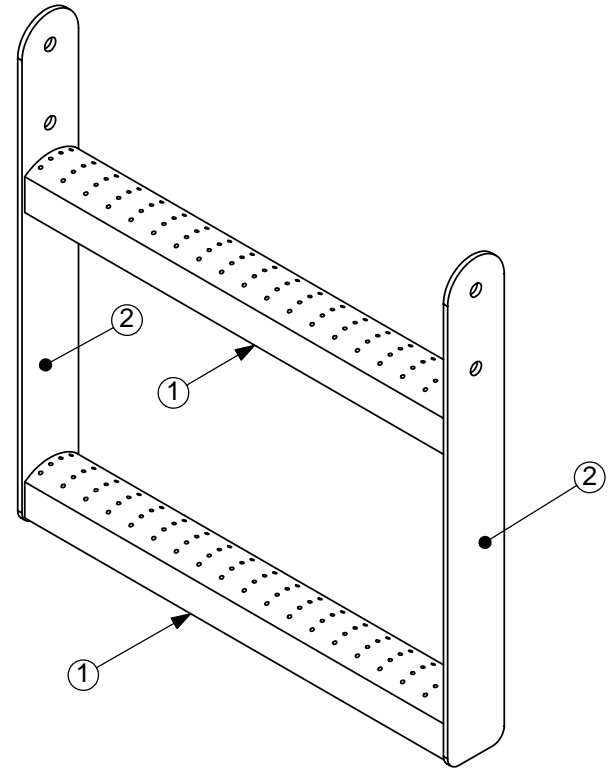
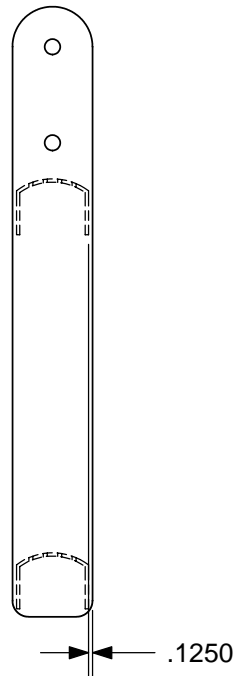
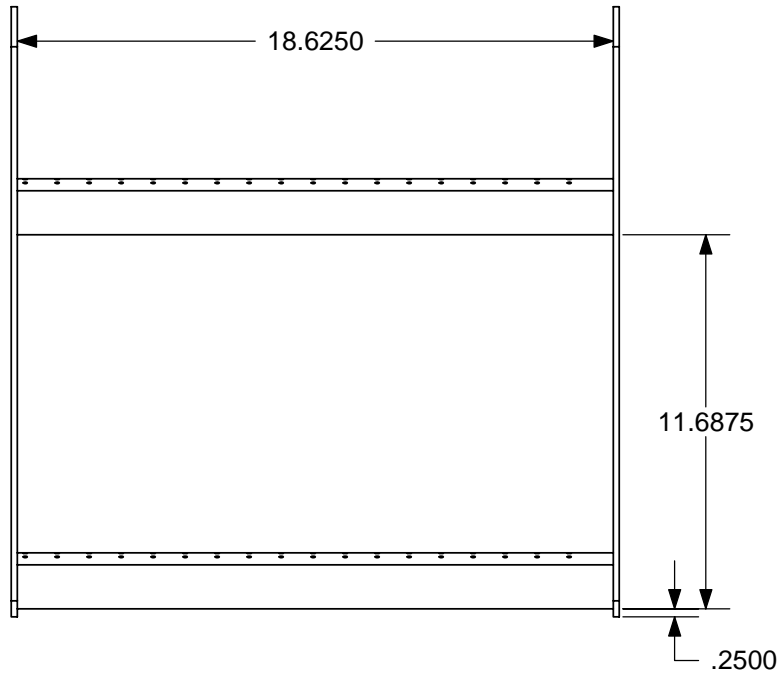
LM-266971

All information contained in this document is proprietary. Do not distribute or reproduce without Hillco Technologies, Inc.'s written permission.

| REV. | DESCRIPTION            | DATE     | BY  |
|------|------------------------|----------|-----|
| A    | Release for Production | 03/31/08 | DJC |

|             |     |             |                          |            |
|-------------|-----|-------------|--------------------------|------------|
| Designed By | DJC | Description | LM STEP ASM, FOLDING LDR | Wt: 10.390 |
| Drawn By    | DJC | Product     | LA-003700                | Scale: 1:6 |
| Page ID     | 1   | Material    | SEE BELOW                |            |

| ITEM NO. | QTY. | PART NUMBER |
|----------|------|-------------|
| 1        | 2    | LM-252301   |
| 2        | 2    | LM-266951   |



LA-267011

All information contained in this document is proprietary. Do not distribute or reproduce without Hillco Technologies, Inc.'s written permission.

Sheet 1 of 1



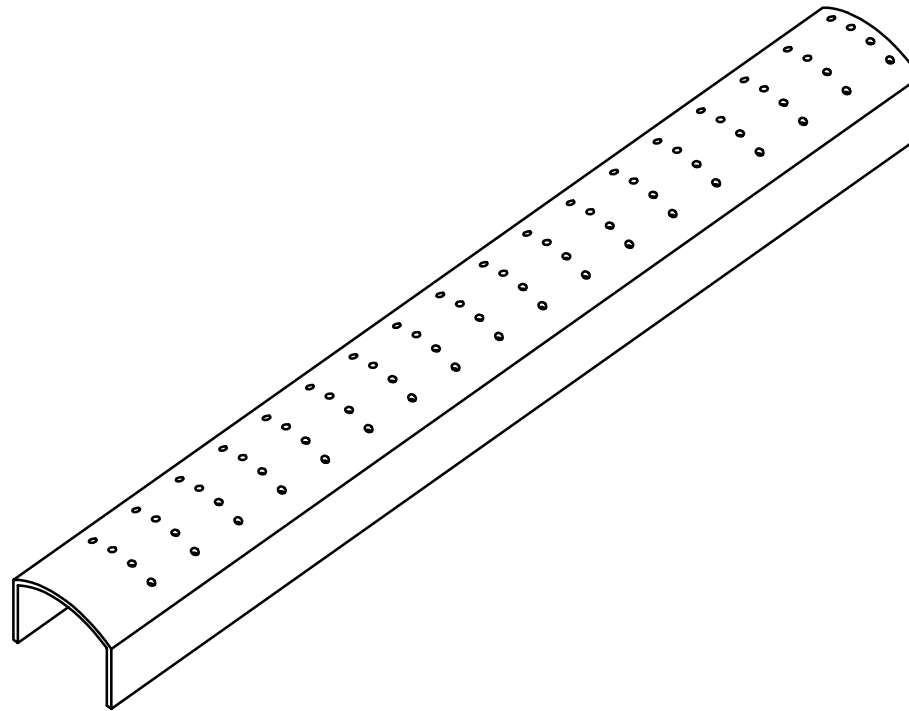
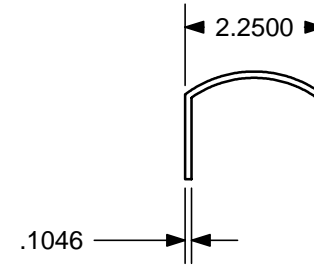
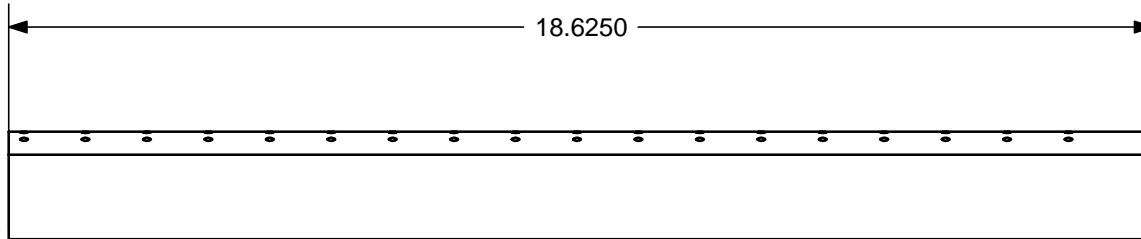
Part #

LM-252301

A

| REV. | DESCRIPTION            | DATE     | BY  |
|------|------------------------|----------|-----|
| A    | Release for Production | 05/24/04 | DJC |

|             |     |             |                              |            |
|-------------|-----|-------------|------------------------------|------------|
| Designed By | DJC | Description | LM STEP, LOWER FOLDING LDR   |            |
| Drawn By    | DJC | Product     | LA-002810                    | Wt: 2.7244 |
| Page ID     | 1   | Material    | GRT TREAD-GRIP LDR RNG 2-1/4 | Scale: 1:3 |



LM-252301

All information contained in this document is proprietary. Do not distribute or reproduce without Hillco Technologies, Inc.'s written permission.

Sheet 1 of 2



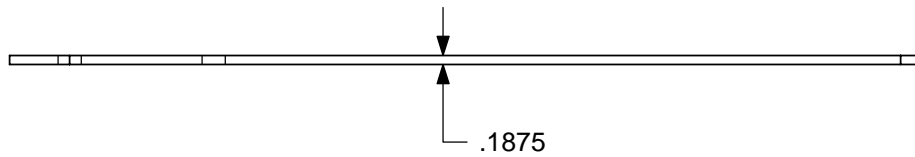
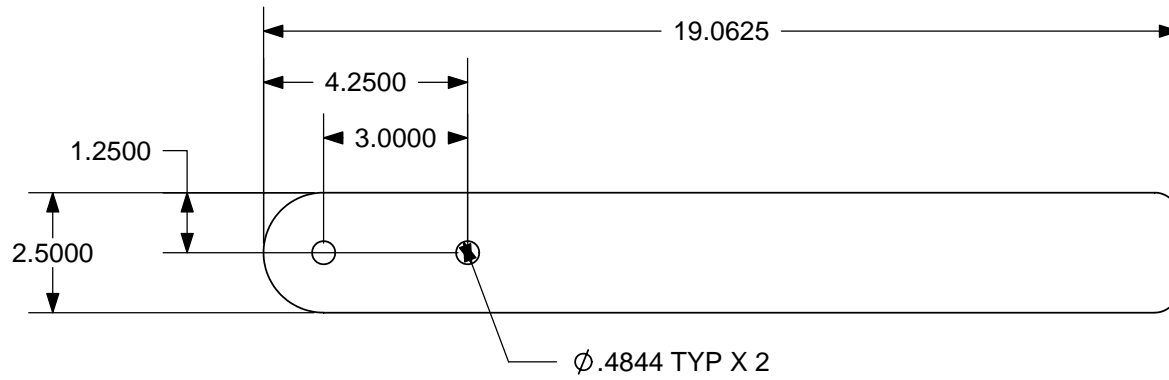
Part #

LM-266951

A

| REV. | DESCRIPTION            | DATE     | BY  |
|------|------------------------|----------|-----|
| A    | Release for Production | 03/31/08 | DJC |

|             |     |             |                     |            |
|-------------|-----|-------------|---------------------|------------|
| Designed By | DJC | Description | LM PLATE, LOWER ARM |            |
| Drawn By    | DJC | Product     | LA-003700           | Wt: 2.490  |
| Page ID     | 1   | Material    | PLT A36 3/16        | Scale: 1:4 |



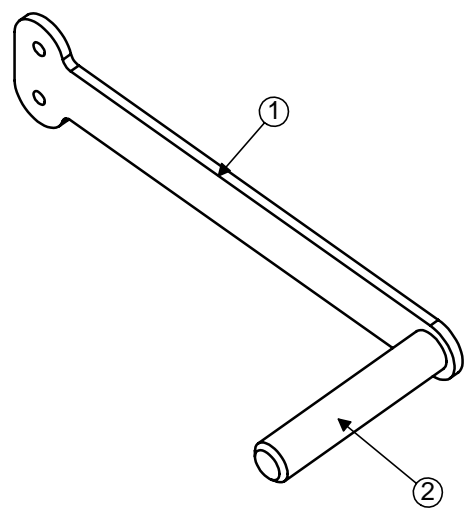
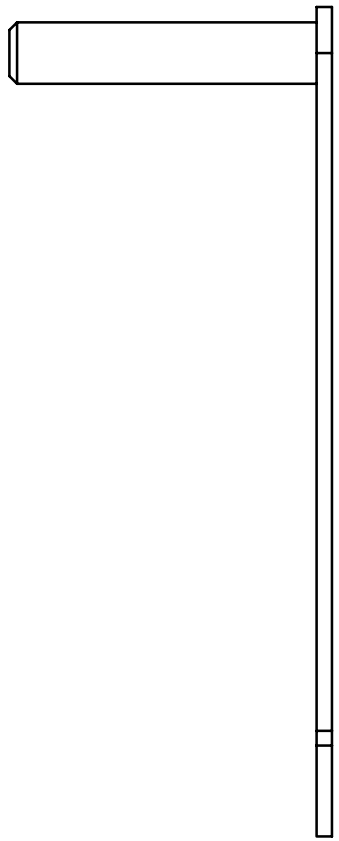
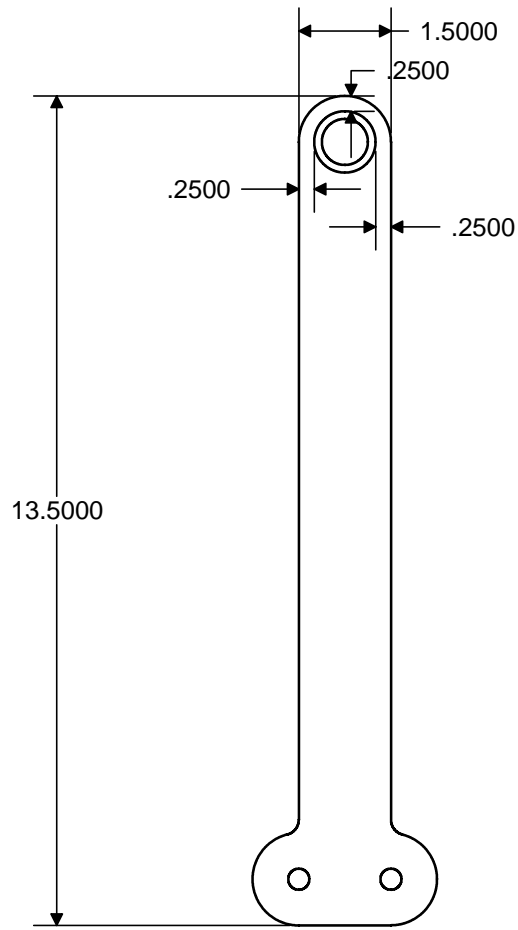
LM-266951

All information contained in this document is proprietary. Do not distribute or reproduce without Hillco's permission.

| Rev. # | ECO # | Rev. Description | Rev. Date | Rev. By |
|--------|-------|------------------|-----------|---------|
| A      |       |                  | 08/20/03  | DJC     |

|        |     |             |                       |
|--------|-----|-------------|-----------------------|
| ENGR.  | DJC | Description | LM ASM, LADDER HANDLE |
| DWG BY | DJC | Product     | LA-002800             |
| PG ID  | 2   | Material    | SEE BELOW             |

| ITEM NO. | QTY. | PART NO.  |
|----------|------|-----------|
| 1        | 1    | LM-248791 |
| 2        | 1    | LM-238751 |



All information contained in this document is proprietary. Do not distribute or reproduce without Hillco Technologies, Inc.'s written permission.

Sheet 2 of 2



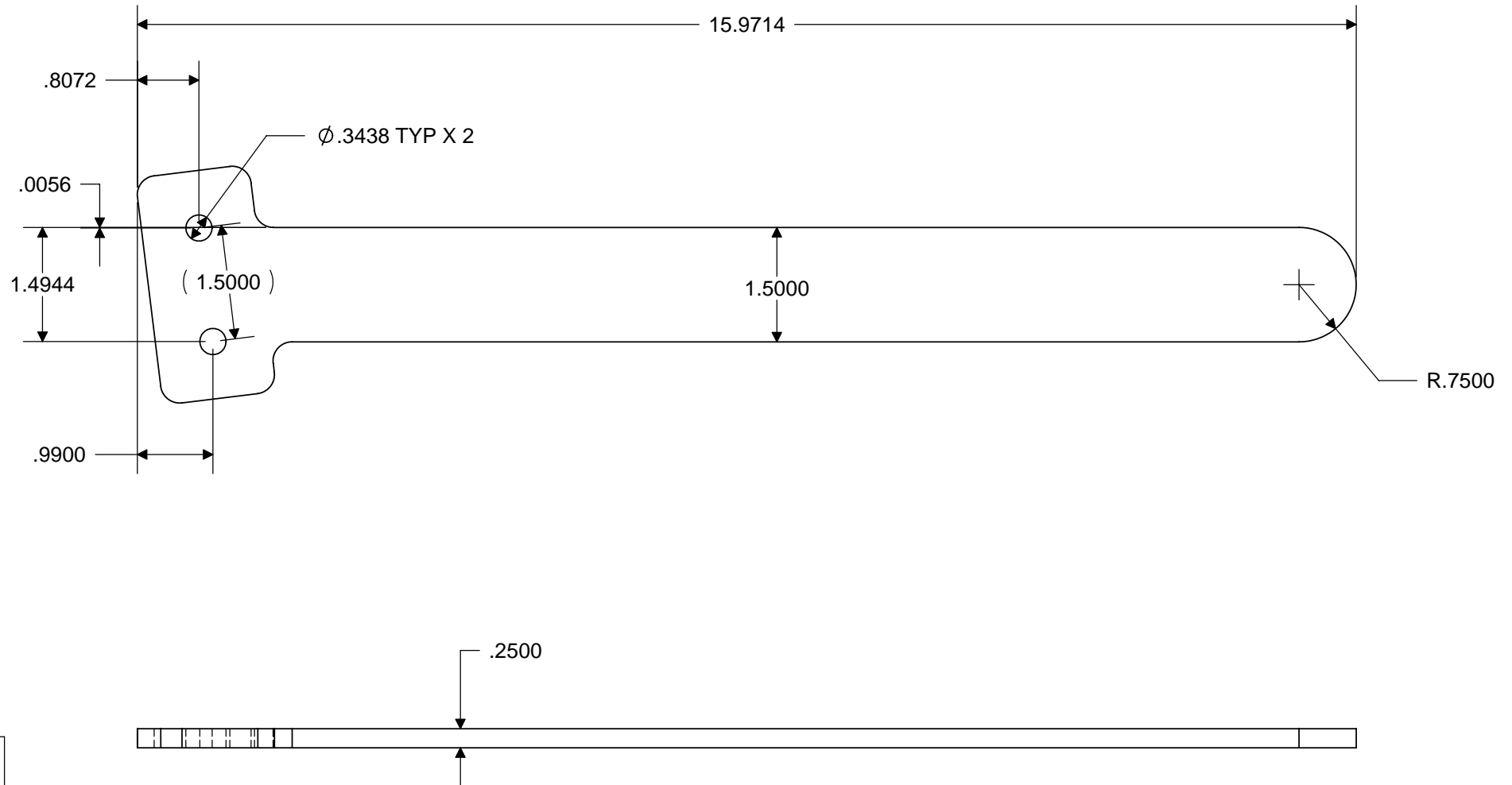
Part #

LM-248791

C

| REV. | DESCRIPTION            | DATE     | BY  |
|------|------------------------|----------|-----|
| A    | Release for Production | 05/24/04 | DJC |
| B    | Moved Mounting Holes   | 06/03/04 | DJC |
| C    | Lengthened Part        | 11/18/04 | DJC |

|             |     |             |                       |            |
|-------------|-----|-------------|-----------------------|------------|
| Designed By | DJC | Description | LM ARM, LADDER HANDLE |            |
| Drawn By    | DJC | Product     | LA-002810             | Wt: 0.2305 |
| Page ID     | 3   | Material    | PLT A36 1/4           | Scale: 1:8 |



LM-248791

All information contained in this document is proprietary. Do not distribute or reproduce without Hillco's permission.

| Rev. # | ECO # | Rev. Description | Rev. Date | Rev. By |
|--------|-------|------------------|-----------|---------|
| A      |       |                  | 11/30/01  | DJC     |
|        |       |                  |           |         |
|        |       |                  |           |         |
|        |       |                  |           |         |

|        |     |             |                 |
|--------|-----|-------------|-----------------|
| ENGR.  | DJC | Description | LM LADDER, GRIP |
| DWG BY | DJC | Product     | LA-002960       |
| PG ID  | 1   | Material    | RND 1018 CD 1   |

