

# *Program Prioritization Progress Report*

**Dr. Lori Stinson**  
Provost / VP for Academic Affairs

**Dr. Andrew Hanson**  
VP for Student Affairs

**August 11, 2016**



# Background

---

- ⌚ All instructional and non-instructional programs were quintiled – 115 in total
- ⌚ **Expected Action**
  - ⌚ **Q1:** Highly successful; seek additional resources
  - ⌚ **Q2:** Highly successful; sustain current support
  - ⌚ **Q3:** Successful; areas for improvement identified
  - ⌚ **Q4:** Multiple elements needing improvement
  - ⌚ **Q5:** Needs major review / restructuring



# Instructional Programs

- Programmatic Actions
- Opportunities

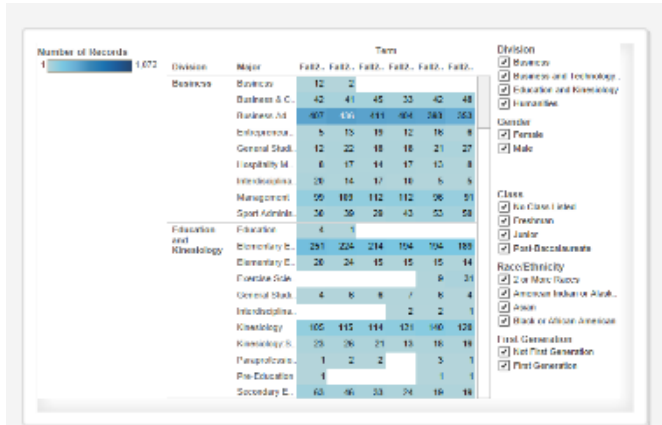


# Non-Instructional Programs

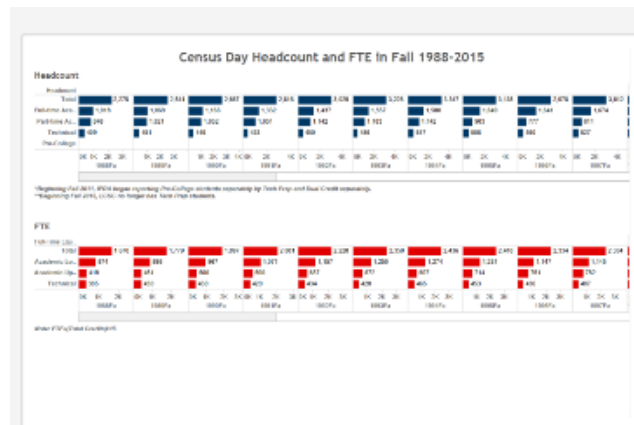


- Programmatic Actions
- Opportunities

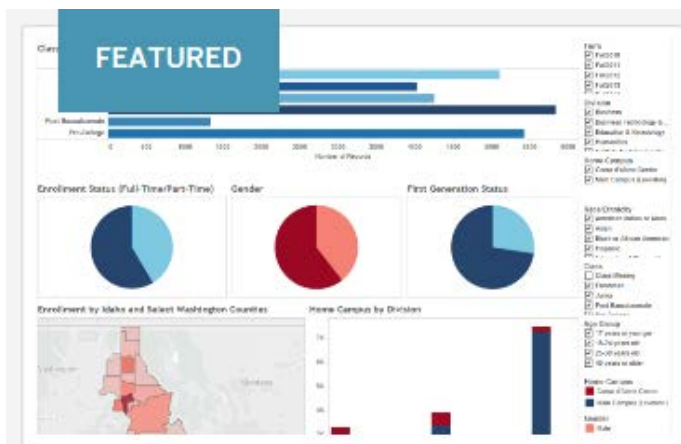
# Integration



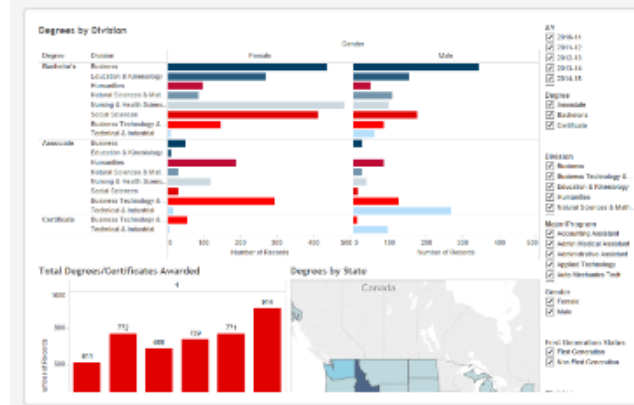
LCSC Fall Enrollment (Duplicated) by Major/Program 2010-15



Census Day Headcount and FTE from Fall 1988 to Fall 2015

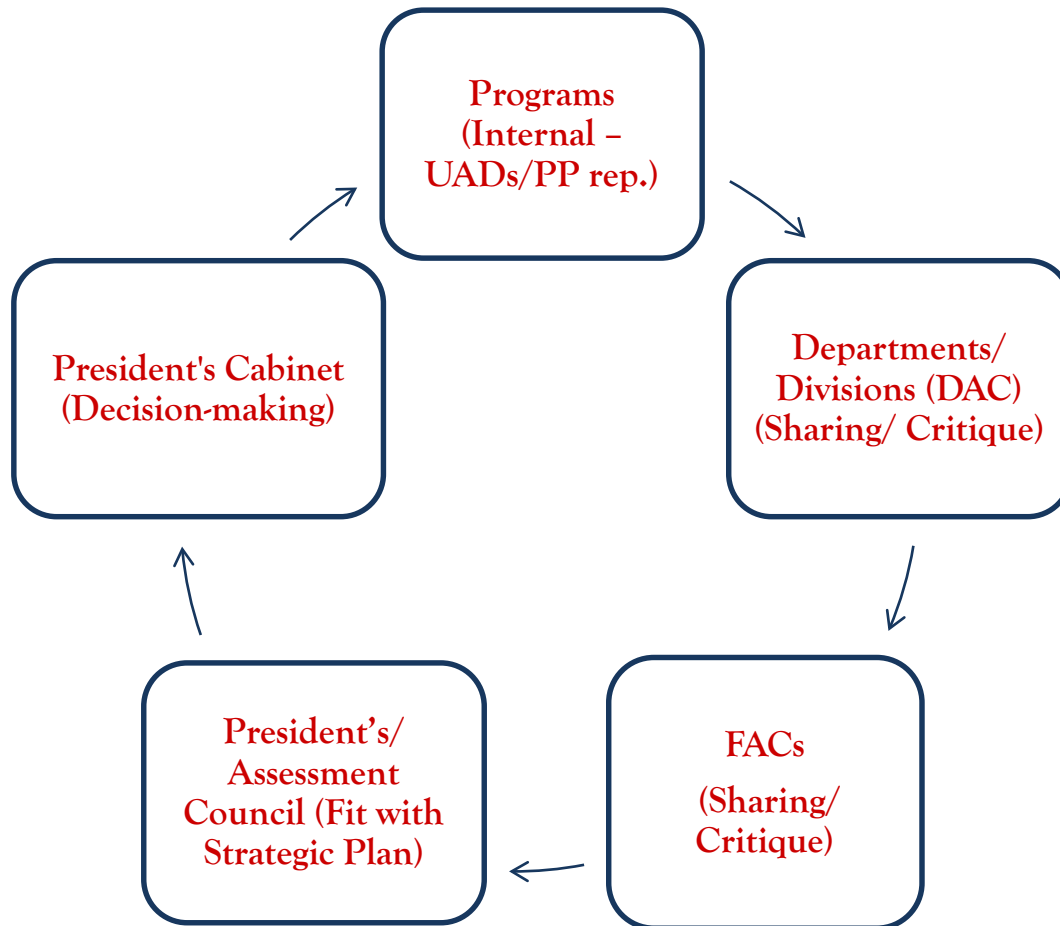


LCSC Fall Enrollments 2010-2015



LCSC Degrees and Certificates Awarded 2011-2016

# Annual Cycle



# PP and FY18 Budget

## Line Item Summary

|                                | Priority | Position   |
|--------------------------------|----------|--|
| Health Professions             | 1        | Kinesiology Asst Professor #1  |
| Education Expansion            |          | Kinesiology Asst Professor #2<br>Program Advisor                               |
|                                |          | Social Work Asst Professor #1  |
|                                |          | Social Work Asst Professor #2<br>Administrative Assistant                      |
| Advising & Career<br>Readiness | 2        | Veteran's Services Coord/Advisor<br>Career Counselor #1<br>Career Counselor #2 |
|                                |          | Student Services Generalist--CDA<br>College Work Scholars Expansion            |



*Thank you*

**Dr. Lori Stinson**  
**Provost / VP for Academic Affairs**

**Dr. Andrew Hanson**  
**VP for Student Affairs**

**August 11, 2016**

